

ADVANCED SOLUTIONS FOR Healthcare

patient safety

quality of care

Meaningful Use

unstructured documents



New solutions for today's healthcare challenges.

Few industries are undergoing as many changes as healthcare. Rising costs and new legislation are forcing providers to find new ways to be more efficient and profitable, while providing a higher quality of care.

Healthcare challenges



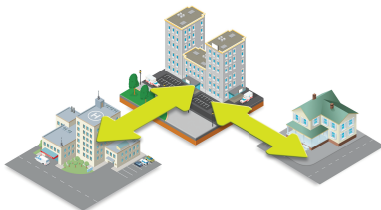
Achieving Meaningful Use

Many providers are rapidly moving to electronic health records (EHRs). To receive the billions of dollars in incentives available under the Health Information Technology for Economic and Clinical Health (HITECH) Act, providers must adopt EHRs and meet Meaningful Use requirements within the next few years.



Improving security and patient privacy

Protecting patient privacy has never been more critical. Healthcare reform brings tighter security standards, higher reporting requirements, and greater penalties for security breaches. Providers must continue to invest in new and improved privacy and security technology to safeguard patient health information.



Efficiently manage provider consolidation

Healthcare reform has caused providers to form larger group practices and increase the number of large hospital systems. This trend toward consolidation frequently requires shared IT infrastructure to reduce costs. During such unstable situations, providers need IT solutions that easily integrate with other systems while maintaining security and efficiency.

Real solutions from Canon

As a leading solution provider in the healthcare industry, Canon can assist healthcare organizations in addressing these challenges. Canon devices and software solutions can help you increase efficiency through streamlining admissions and discharge processes, containing printing costs, and facilitating with certain aspects of HIPAA and the HITECH Act. Canon also provides privacy and security technology to help ensure compliance and safeguard patient health data.

When you partner with Canon, you can easily transition from paper-based to digital solutions which can support providers in meeting their information exchange requirements under Meaningful Use. Canon provides a solution that can aid providers by quickly digitizing forms and integrating patient information with standard HL7 CDA format into their EHR systems.

Canon solutions can help providers reduce the time and cost exhausted on device administration tasks, so healthcare professionals can spend more time where it really counts—focused on improving quality of care and patient safety.



Access management and data security help facilitate HIPAA compliance

Data security and privacy is essential in healthcare. Canon offers a range of solutions that safeguard patient health information (PHI) to support provider compliance with HIPAA and other regulations, without impacting the quality of care.

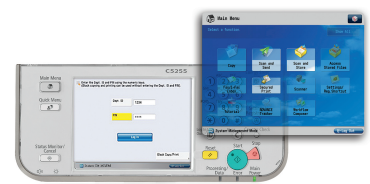


Keeping personal health information confidential

With Canon solutions, you control who is authorized to access, print, copy, scan, or send lab requests, reports, charts, and other patient documents from your MFPs. Authentication and access control options can be used in healthcare facilities to accommodate card- and password-based systems, including Proximity Cards and CAC/PIV.



Universal Login Manager, AA-PRINT, and uniFLOW provide device authentication solutions for practices of any size.



The Canon Access Management System (AMS) easily enables and restricts user access to key functionality based on authentication and user credentials.

Safeguarding private printed documents and incoming faxes

Patient records and other sensitive information left on output trays pose potential security risks. Canon provides driver-based, serverless, and server-based solutions, such as Canon Encrypted Secured Print, AA-PRINT, Secured Print, and uniFLOW Secure Print to help safeguard printed documents. These solutions make it easy to configure MFPs to require user authentication before any printout can be retrieved. Canon MFPs can also be configured to have incoming faxes routed to a password-protected Advanced Box, network folder, or e-mail to further safeguard confidential documents.



Users can be required to authenticate at the device before retrieving printouts.



Incoming faxes with sensitive information can be securely routed to a password-protected Advanced Box, network folder, or e-mail.

Securing sensitive patient data on devices

Another area of potential vulnerability is device hard drives that may store sensitive patient information. Canon security solutions protect patient data on devices and help facilitate HIPAA compliance.



The standard **HDD format** provides up to 9x overwrite for all stored healthcare data when devices reach end-of-life.



The **HDD Data Erase Kit** ensures that sensitive data is deleted on a daily basis and properly erased with standard up to 3x format overwrite as part of routine job processing.



The optional **HDD Data Encryption Kit** uses AES 256-bit encryption to help protect all patient data stored on the internal hard drive.



The **HDD Password Lock** secures the HDD with an automatically generated password (32-byte) to help prevent access to HDD from a PC when it's removed from MFP devices.

Boost productivity and efficiency with HIS compatibility and EHR interoperability

The healthcare industry is rapidly transitioning from paper-based processes to electronic workflows. Canon is uniquely positioned to aid that transition, in part through our partnerships with leading healthcare IT solution providers.



Supporting the flow of information through the Health Story Project

Approximately 60 percent of clinical documents contain valuable information trapped in unstructured documents, such as clinical notes, that are unavailable for clinical use, quality measurement, and data mining.

HEALTH STORY To address this issue, a collaborative of healthcare vendors, providers, and associations founded the Health Story Project. Canon and Nuance Communications, members of the Health Story Project, aim to develop and promote HL7 CDA content standards that support the flow of information between unstructured documents and electronic medical records.

Streamlining paper to EHR integration

Canon and Nuance have partnered together to develop a Scan-to-EHR solution that intelligently scans documents from Canon imageRUNNER ADVANCE and imageFORMULA ScanFront 300E devices into EHR applications. This Scan-to-EHR solution was tested and validated at IHE Connectathon and demonstrated as part of a clinical use case in the Interoperability Showcase at HIMSS.

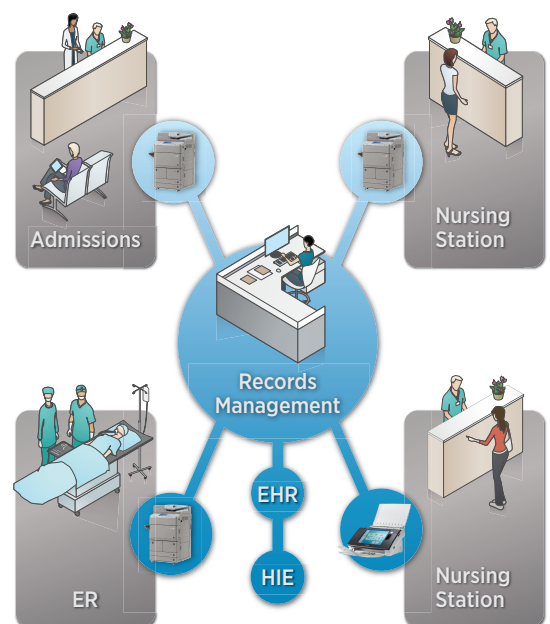
A key advantage of the Scan-to-EHR solution is enabling decentralized scanning. From an MFP or the Canon imageFORMULA ScanFront 300E desktop scanner, providers can quickly and easily transfer information directly into EHRs. Decentralized scanning complements centralized scanning and can help get critical paper-based patient information into the patient's electronic medical record to help improve quality of care.

Canon is the only company that can provide consistent Scan-to-EHR workflow on its own manufactured MFPs and scanners. With Nuance eCopy ShareScan v5, Canon imageRUNNER ADVANCE systems can:

- Scan documents such as consult notes and historical records;
- Generate industry-standard HL7 CDA documents; and
- Pass those messages directly to the EHR.

Ensuring healthcare information system (HIS) compatibility

Healthcare providers print more than one billion clinical documents each year. Canon works closely with industry-leading healthcare information systems providers to help ensure that you can efficiently and effectively print the documents you need. These partners include:



Implement strategies to manage costs

In today's highly competitive healthcare environment, providers of all sizes are deeply concerned about finding ways to reduce costs. Canon offers solutions that can help assess and contain costs by influencing staff behavior, preventing wasteful practices, and providing greater control over device usage across healthcare facilities.



Providing the information you need to encourage cost-conscious behavior

Controlling all the print costs in a healthcare setting can be difficult, especially in large organizations and integrated delivery networks. Universal Login Manager (ULM) and uniFLOW are just two of several Canon solutions that can help influence responsible printing behavior. ULM, a serverless solution, offers convenient user authentication and usage tracking functionality to help manage security and cost by controlling individual users' access and usage. And with uniFLOW, administrators can adjust device and network settings and limit more costly operations. uniFLOW also records printing activity, as well as copy, fax, and scan usage of Canon and non Canon output devices.



Customizable log-in screen



Cost-savings and color usage reports



Simple tracking report

Limiting access for greater cost control and security

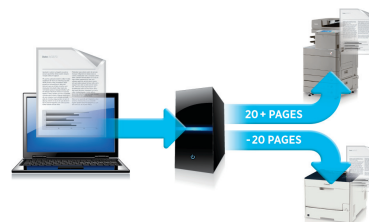
To help cut expenditures and maintain security, you need to control business-wide access to print, fax, Web, and other device features. The Canon Access Management System (AMS) gives you control to limit individual and group access to costlier MFP functionality, such as color printing and copying, and to features such as Web browsing, e-mail, and faxing. With AMS, to further leverage existing roles that are already in place, a physician could be given greater access to services than a nurse, while administrators could be granted access only for their specific job function. Healthcare organizations can also integrate with Active Directory, and customize network print driver settings to maximize resources.



With AMS, specific privileges and access can be restricted or granted depending on specific job function.

Manage printing processes and control costs

Intelligent job routing can help maintain cost efficiency. uniFLOW provides the comprehensive support you need to route jobs securely and automatically to less expensive printers to help identify cost-cutting areas. Routed jobs can be held securely until the user authenticates and releases the job.



Prompt users to send larger print jobs to a secure print queue rather than a more expensive local printer.

Smart solutions to boost efficiency across your organization

Canon solutions are designed to encourage providers to be more efficient and operate more cost-effectively, while maintaining the highest level of patient care. Multifunction devices from Canon can be leveraged to streamline the admission and discharge process, document distribution, and the printing of patient records and images.



Simplifying admission and discharge workflows

Paper-based forms have long been part of the intake and discharge processes. These forms are usually expensive, purchased in quantity, and frequently change, which leads to waste. Canon offers a variety of solutions, such as Advanced Box—a smart file storage system that enables authorized staff to access, store and print on-demand, as well as share common healthcare forms and records directly on the device. Users can gain direct access to locally stored files in printable formats, and even create directories of folders and subfolders, allowing for simplified admission and discharge tasks while ensuring that patient information is accurately recorded. With the ability to link multiple Advanced Box systems together, users are assured that the most up-to-date version is available.



Sending documents quickly, accurately, and consistently

Security is a top priority in healthcare, which means ensuring that patient records, prescriptions, and other documents go to the right destination every time. Canon Workflow Composer (WFC) enables providers to create custom, one-touch buttons that perform repetitive multistep tasks quickly and accurately. In addition, these customized, one-touch workflow buttons can be designated as personalized or shared, allowing only one person or multiple authorized staff members access to particular automated workflows.



With one press of the Workflow Composer button, a combination of document activities, such as scanning, copying, archiving, and sending can be completed.

Secure and convenient mobile printing

Through uniFLOW technology, healthcare providers can securely print documents containing sensitive patient information directly from their mobile devices, with confidence. With uniFLOW Mobile Printing—a downloadable application that runs on tablets and smartphones—actions are easily tracked for overall reporting. The app enables healthcare providers to send a document to print, authenticate at an imageRUNNER ADVANCE system, select that document from the user interface screen, and print it.



Send documents from your mobile device using the uniFLOW Mobile App.

Authenticate at the device and select your document to print securely.

Solutions that boost sustainability and environmentally conscious behavior

Healthcare organizations are making every effort to be environmentally responsible and safety conscious. By designing products to improve efficiency, conserve energy, and reduce waste, Canon strives to meet and exceed safety measures and the most exacting environmental regulations to deliver added value to healthcare providers.



Canon's commitment to the environment

As an ENERGY STAR® partner since 1993, Canon has qualified more than 200 products that incorporate original and advanced energy-efficient technologies, without compromising features or performance. Canon multifunction devices have received ENERGY STAR awards for cost- and energy-saving features.

Reduced warm-up time and heat usage

imageRUNNER ADVANCE systems feature key printing elements that can heat up quickly and print at lower temperatures, which results in reduced costs and less wait time for hospital staff to begin using the devices.

Recycle-conscious designs and energy conservation

Canon development teams consider all stages in each product's life cycle, striving to maximize the use of plastics that have already been introduced into the environment wherever possible.

Better scanning with less energy

Scanning continues to be a large part of healthcare and Canon provides the technology in imageRUNNER ADVANCE devices that reduces scanning power consumption by up to 75% over other models.

Smaller, lighter products

Canon strives to make its products the very smallest and lightest available, which reduces the amount of energy needed for transportation from the factory to your facility.

One-watt sleep modes

With one-watt Sleep mode, imageRUNNER ADVANCE devices can lower energy consumption even when the device is not in use, helping to keep costs down.

Toner cartridge recycling

To help support your facility's local recycling efforts, a plastic resin code is engraved on each toner cartridge. In the event that Canon plastic toner cartridges can't be recycled locally, Canon also offers a collection program.

Reducing waste

Canon enables you to implement smart printing policies, such as secured printing, default duplex printing, and fax forwarding to help reduce waste.



Advanced solutions for a new era of healthcare

From leading scanning and printing solutions to digital radiography and eyecare products, Canon designs solutions that assist providers of all sizes in reducing expenses, achieving compliance, and completing everyday tasks faster and more accurately.



Canon
*image*ANYWARE

1-800-OK-CANON
www.usa.canon.com

Canon U.S.A., Inc.
One Canon Park
Melville, NY 11747

CANON, IMAGERUNNER, IMAGEPRESS, IMAGEFORMULA, and MEAP are registered trademarks of Canon Inc. in the United States and may also be registered trademarks or trademarks in other countries. IMAGEWARE is a registered trademark of Canon U.S.A., Inc. in the United States and is a trademark of Canon Inc. in certain other countries. IMAGEANYWARE is a trademark of Canon. All other referenced product names and marks are trademarks of their respective owners and hereby acknowledged. Specifications and availability subject to change without notice. Products are not manufactured for outdoor use; depiction of such is for artistic purposes only. Products shown with optional accessories. Some items may not be available at this time; please check for availability. All printer output images are simulated. Nothing in this brochure should be construed as legal counsel or regulatory compliance advice, including without limitations with respect to statutes such as Sarbanes-Oxley, HIPAA, GLBA, Check 21 or the USA Patriot Act. Each customer must have its own qualified counsel determine the advisability of a particular solution as it relates to regulatory and statutory compliance.

©2012 Canon U.S.A., Inc. All rights reserved.

0171W395
1212-HCBRO-10M-LMC